

MOVING TECHNOLOGIES



MEGAPARTNER[®] - MG

COLUMN MGC



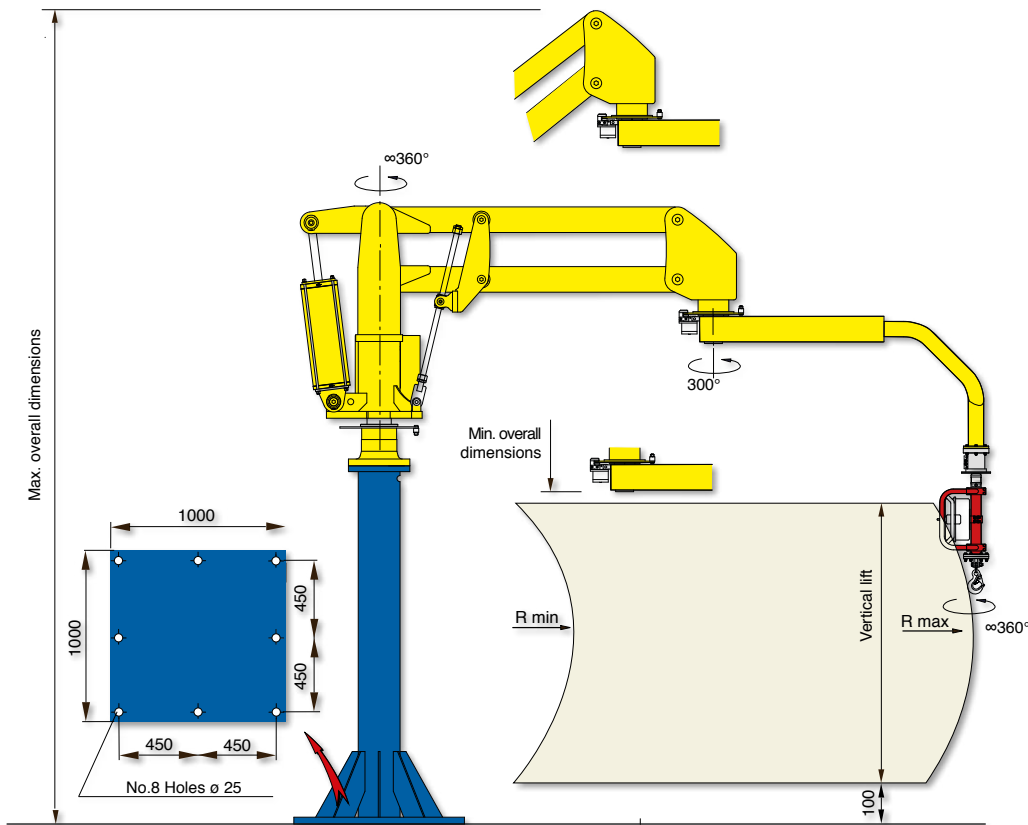
 **dalmecc**
Industrial Manipulators

Pneumatic Manipulator MEGAPARTNER MG with articulated arm

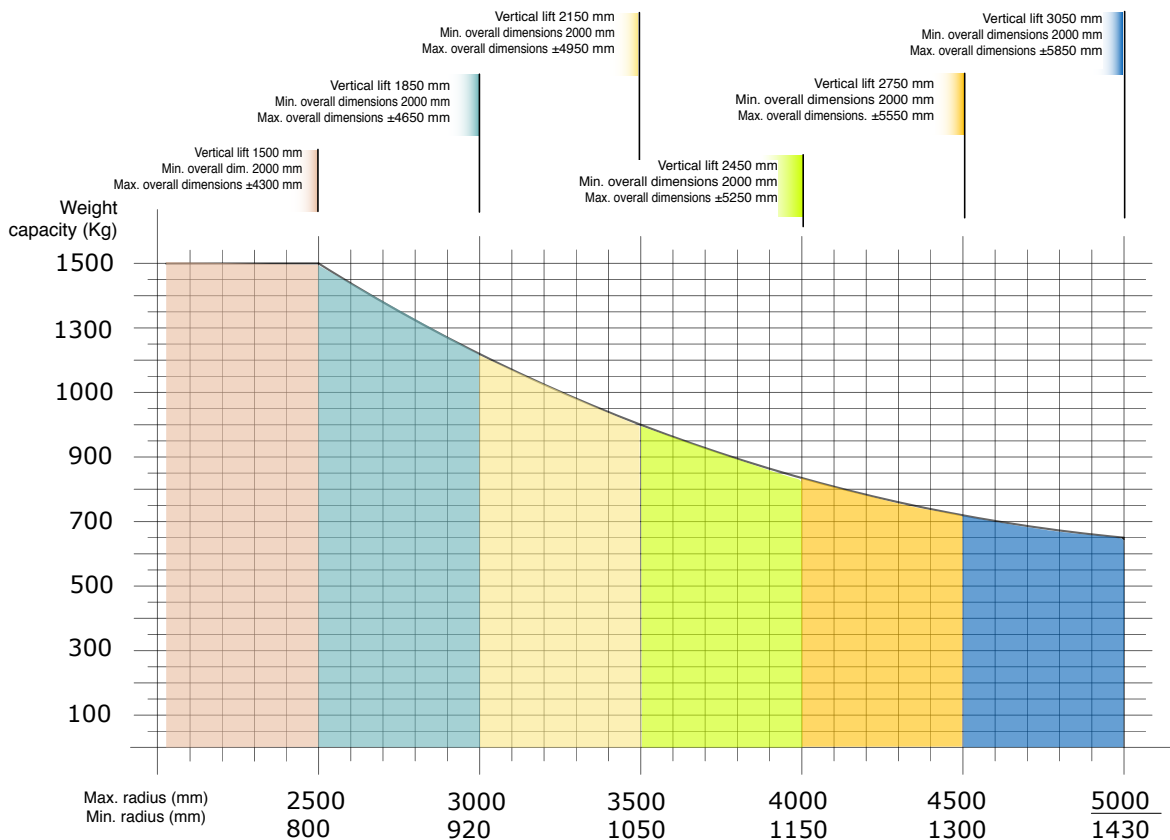
MEGAPARTNER MG, is a Manipulator with extremely high load capacity, is able to handle loads up to 1500 Kg and reach working radii up to 5000 mm with loads of 650 kg, maintaining a good handiness and fluidity, assuring the operator to work with moderate efforts in good ergonomic conditions and with the utmost safety.

MEGAPARTNER[®] - MG

Megapartner column mounted - MGC



Structural versions: column mounted on fixed base-plate.



Air supply: Dry and oil-free compressed air min constant 0.7÷0.8 MPa